

We played Back to the Future II for last week's movie night. This week we are going to show Back to the Future III. Have you seen II? They travel into the future. Do you know what year they go to? 2015. Yes, that's right. They travel to 4 years ago. If you have seen the movie, you will know that they have quite a few things that we don't have yet: flying cars, hoverboards, and self-tying<sup>1</sup> shoes. It is quite interesting when we watch a movie like this and think about how people imagined the future. What do you think will happen in the next 30 years?

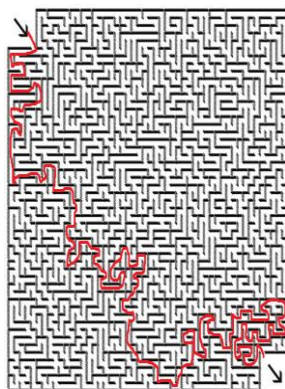
### Something You Didn't Know (The Eiffel Tower)

1. It was designed and built by Gustave Eiffel in 1889.
2. It was built for the 1889 World's Fair<sup>2</sup>. It was supposed to stand for 20 years and then be destroyed. However, it became useful for communication (radio mast<sup>3</sup>) and then gradually became a symbol of Paris and France, so it was kept.
3. It is the most visited paid monument in the world, 7 million people climb it every year.
4. It is 324m tall and was the tallest building in the world from 1889 to 1930.
5. In WW2, Hitler wanted the tower destroyed, but his order was disobeyed<sup>4</sup>.
6. It takes 60 tons of paint to cover the whole tower and it has been repainted 19 times.
7. Over 250,000,000 people have visited the tower so far.

### 10 differences



Last week's answer:

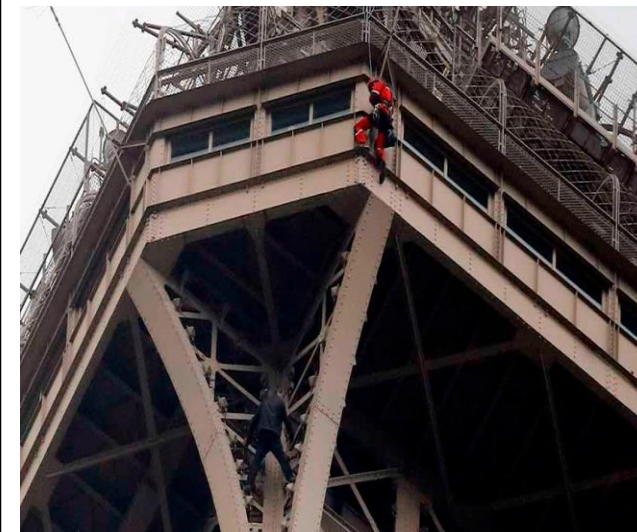


### Announcements

Not much is happening this week because you have tests coming up. Good luck.

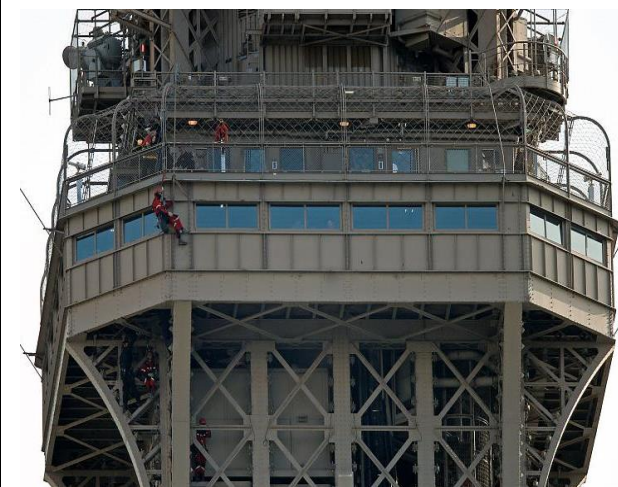
### Man Climbs Eiffel Tower

Last week, the Eiffel Tower was shut for 6 hours while rescue teams tried to catch a man who had climbed it. The man has not been identified<sup>5</sup> and the police have not said why he climbed the monument. The police feared that it might be some kind of terrorist attack and about 2,500 people were evacuated<sup>6</sup> from the tower before it was closed down. In the end, the man was caught and brought back down. He did not say anything when he was arrested.



The Eiffel Tower is supposed to have very good security and it is supposed to be impossible to climb the tower. Obviously, the security is not as good as the French government thinks. The man was able to bypass<sup>7</sup> all of the security and he had already climbed quite high before he was noticed. He continued to climb up the outside of the tower and stopped when he got to the bottom of the third level, 276m up. It is too hard to climb from there.

He stayed there for six hours and moved round a little to avoid<sup>8</sup> the security forces. Finally, perhaps because he got bored, he gave up and the police took him inside the building. He was brought down by the stairs. There have been a few suicide attempts<sup>9</sup> off the tower over the years, but surveillance<sup>10</sup> has been strengthened to make that harder. It will be interesting to find out what the man wanted.



1. Self-tying 自動結び靴ひも 2. World's Fair 世界博覧会 3. Radio mast ラジオ塔 4. Disobey 従順でない 5. Identify 名前を確認 6. Evacuate 非難する 7. Bypass ~を完全に無視する 8. Avoid 避ける 9. Suicide attempt 自殺未遂 10. Surveillance 監視



# ★ English News Page 2 ★



## Strange World Records

Do you like roller coasters? I used to, but they make me sick now. I think I am getting old. Anyway, this week's world record goes to the Takabisha roller coaster in Fuji-Q Highlands. It has the record for the world's steepest<sup>1</sup> roller coaster. It has a drop that is 121° , sometimes known as a beyond-vertical drop. That sounds pretty impressive but I don't think I would be able to ride it. I have a feeling that I would probably lose control of my lunch<sup>2</sup> and upset most of the other people on the ride.



If you cannot do great things, you can do small things in a great way.

# ★ Something Big ★

I talked about the world's largest ship a few weeks ago, so, this week, let's look at the world's largest plane. It is the Antonov An-225 Mriya. It is a Russian plane that was built in 1985. It is so big that it can carry up to 640 tons of cargo<sup>3</sup>! It has 32 wheels to cope when landing with such a large amount of cargo and it has a wingspan<sup>4</sup> of 88.9m. Despite being so large and carrying so much, the plane can still fly as fast as a Boeing 747. The plane was used by the Russian military for years, but was retired and became a commercial plane. It has carried many things that only a large plane can carry over the years, such as the space shuttle<sup>5</sup>. In 2009, it carried a 189 ton generator for a gas power plant, the heaviest single item ever transported by plane.



# ★ The Great Wall of China ★

Many people think that you can see the Great Wall of China<sup>6</sup> from space. The reasoning is that it is so big that it must be visible from space, but, even though it is big, it is not very wide. At its widest point, it is only about as wide as the small road behind our school, and you can't see most roads from space. If you don't believe me, have a look at this picture. You might think you can see the wall (you are looking at that line going top left to bottom right), but that is actually a very large river. The Great Wall runs top right to bottom left in this picture. Can you see it? Not really.



**New words:** 1.Steep 急角度 2.Lose control of my lunch 吐く 3.Cargo 貨物  
4.Wingspan 羽長 5.Space shuttle スペースシャトル 6.The Great Wall of China 万里の長城